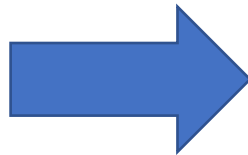




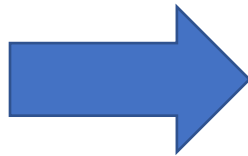
East Worlington Parish Hall

East Worlington Parish Hall was a Tithe Barn of cob wall and thatch construction built in the second half of the C17th. Originally a building associated East Worlington Rectory (now East Worlington House) and under the ownership of the church.

**FROM
TITHE BARN**



**TO
PARISH HALL**



By the **early 1900's** the barn was used for community events under the ambition and generosity of the rector at the time.

In **1920** the building came under community ownership when the rector sold it to the Parish Council and managed by a group of Trustees.

2010 Trustees aim to improve conserve and sustain the Hall as a **Community Hub** and a **Heritage Learning Centre**.

How Garfield Weston Have Supported East Worlington Parish Hall

- Offered opportunity contributing to motivation and optimism
- Provided financial support practically contributing to improvement outcomes
- Facilitated support from other grant funders requiring matched funding
- Valued our community projects and contribution to sustainability
- Increased morale of community volunteers



Community Needs

When we started our project in 2010, we wanted to have a Parish Hall which fulfils its role as

- A Community Hub offering:
 - Social, Recreational, Learning, Health-related, Arts and Cultural activities
 - A Community Meeting and Community Infra-structural facility
- A Heritage Learning Centre providing learning about our local heritage.

Community

We undertook a community survey and community consultation to identify community needs and expectations.

- Isolation
- Loneliness
- Vulnerability
- Need for social interaction
- Improve sense of community
- Need for learning activities
- Enhance heritage value
- Need for catering at events

Building

We commissioned a condition survey to clarify the issues associated with the building.

- Rotting Floor timber
- Rising damp and Condensation
- Re-thatching
- Poor environmental footprint
- Inadequate plumbing and heating
- Non-compliant electrics
- Limited storage
- Limited/ inadequate catering facility

Our Solution

We established a long-term (10 years) three phase which addressed the improvement and conservation issues

- Phase 1 Main Hall Conservation and Improvements
- Phase 2 Kitchen Improvements
- Phase 3 Foyer, Toilets and Storage

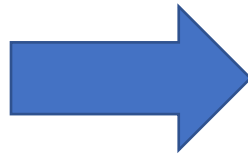
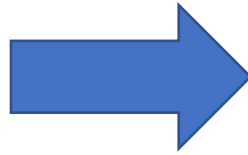
WE NEEDED SUPPORT

**East Worlington Parish Hall
Supported by**



Garfield Weston
FOUNDATION

Phase 1 – Main Hall Conservation and Improvements



Phase 1 – Grand Opening 2016

East Worlington Parish Hall
Opened by
David Fursdon
HM Lord-Lieutenant of Devon
On
Friday 3 June 2016
Following a major refurbishment

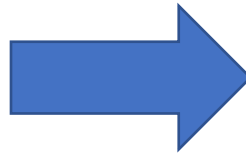
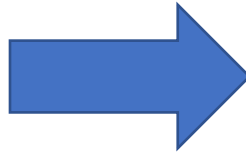


Phase 2 – Kitchen Project

FROM



TO



Benefits

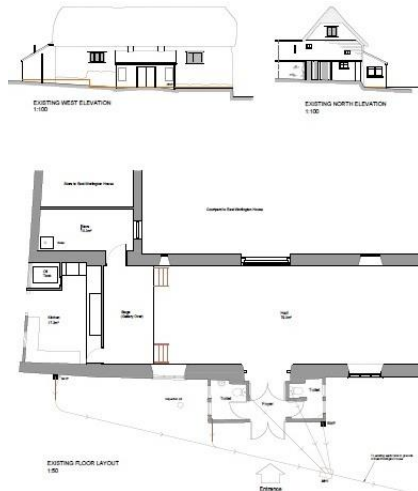
Volunteer Service Providers

Community Users



Phase 3 Foyer, Toilet and Storage Supported by Garfield Weston Anniversary Fund

FROM



The Challenges

- 1960's lean-to porch / toilet
- Detrimental to heritage value
- Non-compliance – electrics, plumbing, space
- Inadequate unhygienic facility
- Leaking roof
- Massive heat loss
- No storage

Publicity and Communication

The Project Progress Plan

- ✓ Planning Phase (February to June 2018)
- ✓ **Apply to Garfield Weston Anniversary Fund** (July 2018)
- ✓ **Site Visit from Garfield Weston** (August 2018)
- ✓ **Grant Application Successful** (October 2018)
- ✓ Appoint Project Lead (October 2018)
- ✓ Commission Main Contractor (October 2018)
- ✓ Structural Survey Report (November 2018)
- ✓ Archaeologist Report (November 2018)
- Start Construction (March 2019)
- Complete Construction (June 2019)
- Celebrate (June 2019)



The Outcomes

- Enhanced heritage value
- Adequate toilet including disabled toilet facility
- Baby changing facility
- Storage facility
- Environmentally friendly
- Improved sustainability

TO