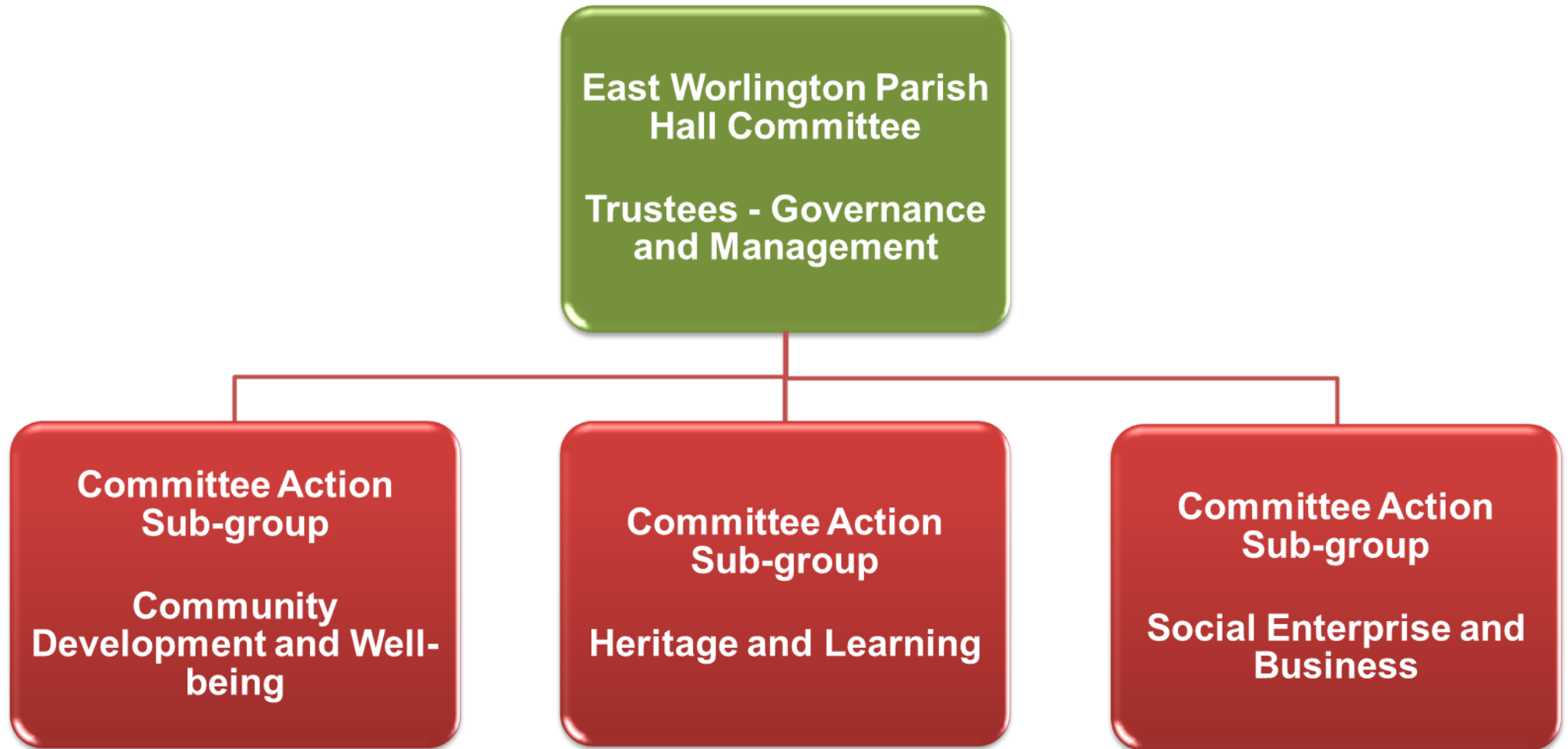


East Worlington Parish Hall Committee Governance and Management Organisational Structure



East Worlington Parish Hall Management Committee - Trustees			
Constitution	"held upon trust for the purposes of the village hall for the use of the inhabitants of East Worlington and the neighbourhood ((hereinafter called "the area of benefit") without distinction of sex or of political, religious or other opinions, and in particular for the use of meetings, lectures and classes, and for other forms of recreation and leisure-time occupation, with the object of improving the conditions of life for the said inhabitants".		
Membership	<ul style="list-style-type: none"> • Steve Baber (Chair) • Campie Hurst-Bannister (VC) • Miya Bond (Honorary Treasurer) • Rachel Jenkins (Honorary Secretary) 	<ul style="list-style-type: none"> • Winnie Corley • Brian Edwards • Sandy Haughton • Liz Guppy 	<ul style="list-style-type: none"> • Lorna Manton • Philip Risdon • Terry Pullen
	Committee Action Sub-group Community Development and Well-being	Committee Action Sub-group Heritage and Learning	Committee Action Sub-group Social Enterprise and Business
Terms of Reference	<ul style="list-style-type: none"> • To be aware of and understand the health, social and well-being needs within the community • To establish, manage the implementation of, review and update a Community Development and Well-being Programme. • To identify possible funding opportunities and ensure that appropriate applications are made. 	<ul style="list-style-type: none"> • To establish and manage the implementation of a Heritage Project Plan. • To identify possible funding opportunities and ensure that appropriate applications are made. • To oversee the development and maintenance of the Parish Hall as a Heritage Hub 	<ul style="list-style-type: none"> • To promote the Parish Hall as a venue of choice for hire. • To ensure a maintenance and improvement plan is created, implemented and reviewed to ensure the Hall is able to meet the needs of its hirers and users. • To oversee the establishment of an events and activities plan designed at income generation. • To manage the offer of services that contributes to income generation.
Membership	<ul style="list-style-type: none"> • Jude Coldwell • Mark Edmonds • Steve Baber • Miya Bond (Honorary Treasurer) • Liz Baber • Brian Edwards • Barbara Edwards 	<ul style="list-style-type: none"> • Steve Baber • Miya Bond (Honorary Treasurer) • Liz Guppy • Sandy Haughton • Gavin Manton • Lorna Manton • Philip Risdon 	<ul style="list-style-type: none"> • Campie Hurst-Bannister • Miya Bond (Honorary Treasurer) • Lorna Manton • Steve Baber