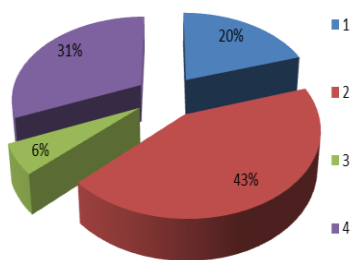




COMMUNITY SURVEY REPORT FEBRUARY 2012

- ✚ A Community Survey was undertaken between December 2011 and January 2012 to enable the community to offer their perceptions, view, ideas and opinions about the Parish Hall, the role it plays in the community, its facilities and services and its future potential.
- ✚ The questionnaire was available for completion by the whole community in paper format, as an email attachment, and as a downloadable document from the Community Website.
- ✚ There were 40 questionnaire responses and 9 verbal responses. The following summarises the response for each question, the conclusions drawn from the responses, the key issues for each question and the actions to be taken by the Parish Hall Management Committee

Use of the Hall Now and in the Future



1. The current use is fine and I **don't** think there is any potential.
2. The current use is fine and I **do** think there is some potential.
3. There could be some immediate changes but no potential beyond these changes.
4. There could be some immediate changes and there is some potential beyond these changes

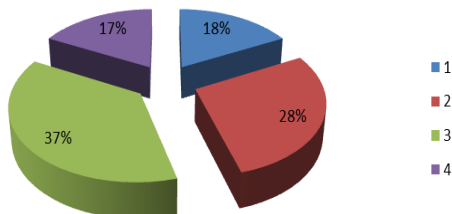
Conclusion

There is more potential for the use of the Hall than its current use and we need to improve the Hall to enable this potential to be realised.

The main issues

Improve heating / internal warmth; Improve kitchen and catering facilities.

What helps or hinders people booking and using the Hall?



1. I don't know why people choose to or choose not use the Hall.
2. I've not had a need to book the Hall myself but I have a view about why people choose to book or not book the Hall.
3. I've had a need to book the Hall before and I chose to book it.
4. I've thought about booking the Hall before and I chose not to book it.

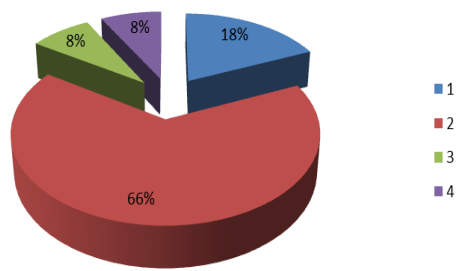
Conclusion

This is seen to be a good local venue that is valued by many people and with potential for further use if identified issues are resolved.

Key Issues

Poor heating; limited car parking; impression of extensive rules and regulations;

Facilities available at the Hall



1. The current facilities are fine as they are.
2. I generally think that facilities should be changed / improved.
3. I have a specific need now for changed / improved facilities.
4. If there were changes / improvements in the facilities it is possible I would think about using the Hall in the future.

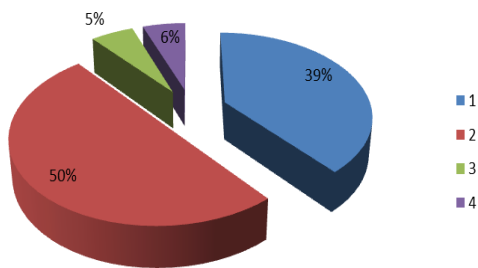
Conclusion

There is significant support for the improvement of the Hall's facilities

Key Issues

Improve heating; improve kitchen facilities; good new chairs now new tables; better Information and communication technology

Equipment available at the Hall



1. The current equipment is fine as it is.
2. I generally think that equipment should be changed / improved.
3. I have a specific need now for changed / improved equipment.
4. If there were changes / improvements in the equipment it is possible I would think about using the Hall in the future.

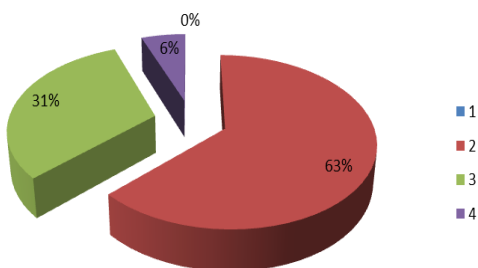
Conclusion

There is significant support for improvement to the equipment available at the Hall

Key Issues

Improved tables; improved crockery and cutlery and glasses.

Information about the Hall



1. This sort of information is not important.
2. Current information about the Hall is fine.
3. I think generally information available about the Hall could be changed / improved.
4. There are specific aspects of information about the Hall that should be changed / improved.

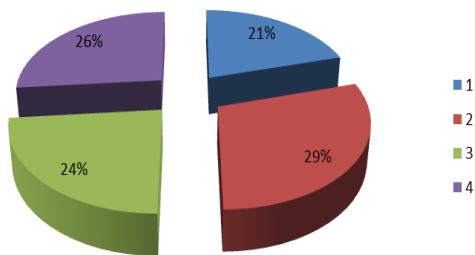
Conclusion

Generally information about the Hall is seen to be satisfactory with some specific issues highlights in relation to how to book and hire charges.

Key Issues

Public information about booking and hiring; more clarity about booking charges; more information about how the hall is used 'what's on'.

Internal Conditions in the Hall



1. The internal conditions are fine as they are.
2. I think generally there are things that could be changed / improved.
3. I think there are specific things that should be changed / improved.
4. There are specific things that should be changed / improved and this will improve my use of the Hall and/or my level of satisfaction when I attend events at the Hall.

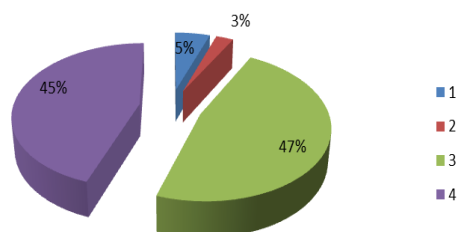
Conclusion

There is general satisfaction with the internal conditions of the building with some specific issues that adversely affected some people’s levels of satisfaction.

Key Issues

Poor heating; need for curtains; improve sense of warmth – colours, etc.

Importance of the Hall in the Community



1. The Hall is not important in the community and it would have no impact on the life and well-being of the community if there was no Hall.
2. The Hall has a role in supporting community life and well-being but if there was no Hall it would have little negative impact on community life and well-being as the role could be fulfilled in other venues and in other ways.
3. The Hall has a role in supporting the community life and well-being and its current role and function offers a satisfactory level of service and positive impact.
4. The Hall has a significant role in supporting community life and well-being and could have greater positive impact.

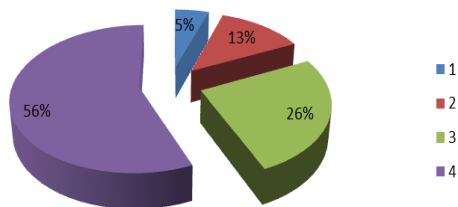
Conclusion

The hall plays a vital role in the community and is important to many community members

Key Issues

More regular activities; continued use by the school and children and young people activities; maximise the potential of good ‘brand awareness’.

Investment in heritage and securing the Hall for generations to come



1. There is no need to invest in the Hall.
2. The only investment required is in addressing essential repairs and maintenance tasks as they become needed.
3. Investment should only be focused on medium term plans to re-thatch the building and ensure essential maintenance and repairs are undertaken.
4. Long term investment plans for the restoration, maintenance and improvement of the Hall as a significant part of our cultural heritage with modern facilities, for future generations to use, is a desirable ambition and should be pursued.

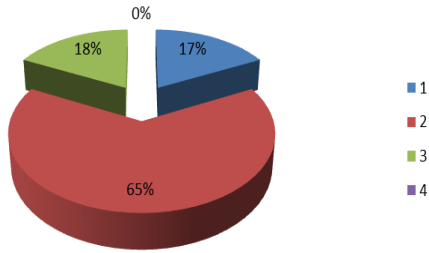
Conclusion

Investing to support a key feature of our community heritage and ensuring it is sustained for future generations is important.

Key Issues

Invest in the urgent and important aspects for improved community use first; maintaining it in good condition so future generations have a good base to add their own ideas and improvements.

Community Needs and Aspirations and the Hall



1. I don't think that there are any additional needs and/or aspiration for the Hall in the community.
2. I think that there might be some additional needs and/or aspirations where the Hall might have a role.
3. I know of needs and/or aspirations where I think the Hall could have a role.
4. I know of needs and/or aspirations where I consider the Hall to have a definite role.

Conclusion

There is a sense of some unmet community needs and aspirations that might be met through the facilities of the Hall.

Key Issues

Wide range of additional activities; possible access to community services; 'drop in' facilities.

Priorities	Actions
<p>Improve the heating Improving the heating needs to address prevention of rising dampness, condensation, insulation and more effective heat source.</p>	<p>We will:</p> <ul style="list-style-type: none"> • develop an Improvement Plan • develop a Business Plan • seek the necessary funds
<p>Enable more use of the kitchen Enabling more use of the kitchen includes health and safety including fire safety and food hygiene and appropriate facilities</p>	<p>We will:</p> <ul style="list-style-type: none"> • develop an Improvement Plan and Business Case, including a list of equipment requirements • undertake a review of health and safety, fire safety and food hygiene and ensure statutory requirements are in place • apply for appropriate permissions • seek the necessary funding
<p>Improve the catering equipment Improving the catering equipment includes crockery, cutlery, catering tools.</p>	<p>We will:</p> <ul style="list-style-type: none"> • Create a list of all the catering equipment required • Seek the necessary funding
<p>Improve information about the hall Improving information about the hall relates mainly to more places to find how to book and the hiring costs, and generally what's on and how the hall is used.</p>	<p>We will:</p> <ul style="list-style-type: none"> • Develop a Parish Hall website • Develop a Parish Hall Newsletter • Develop a Parish Hall page on Facebook • Put regular information in the Parish Newsletter • Add relevant information about booking and costs to parish Noticeboards, in Newsletters and on websites
<p>Establish a more extensive community programme of activities and opportunities Improve the activities and opportunities that are available for people in the community to engage in.</p>	<p>We will:</p> <ul style="list-style-type: none"> • Aim to offer facilities that encourage and support activities and opportunities • Work strategically with providers to stimulate activity and opportunity • Produce a Parish Hall Management Committee annual programme of events